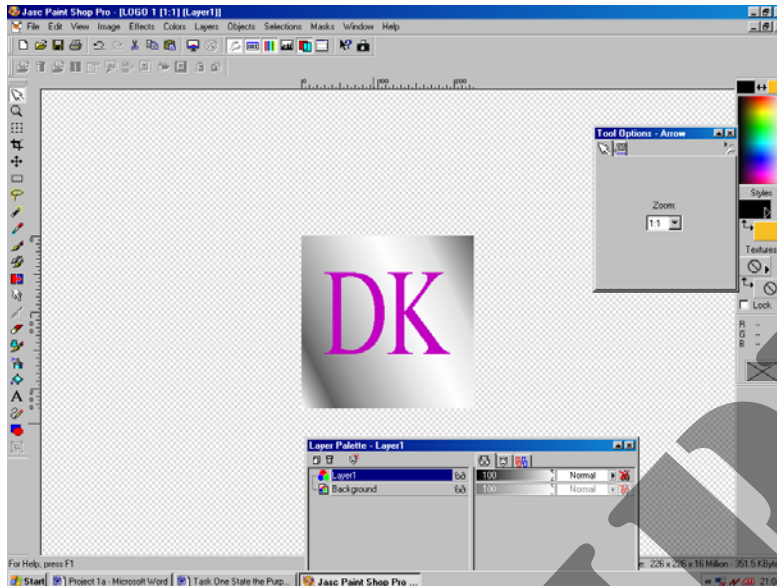


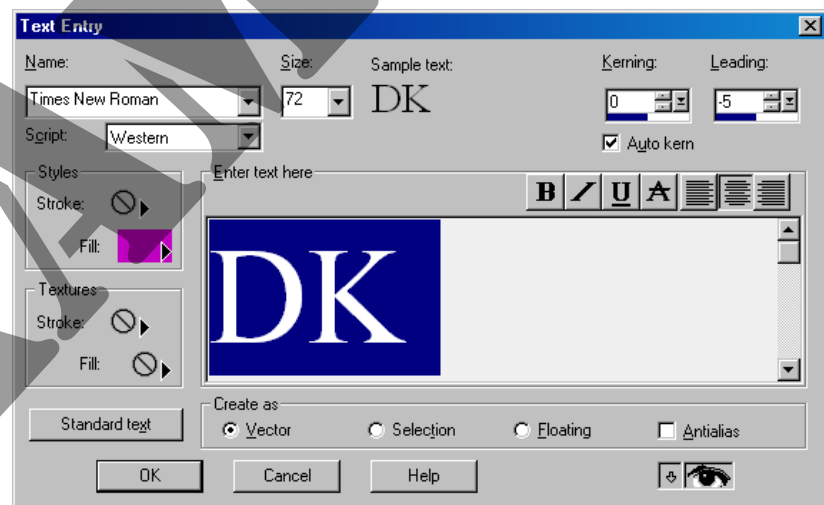
Logo Design

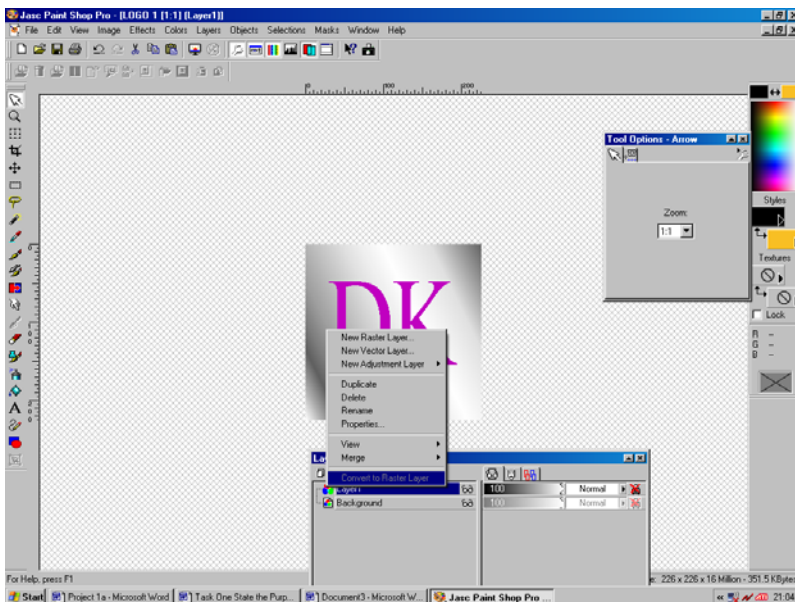
Once I had my background colour set I chose a Suitabe typeface. I chose **Times New Roman** as it is a classic typeface that will give a professional and sophisticated image.



I chose the colour purple as this is a colour associated with royalty and it is a rich oppulent coul which will give a quality image to the business. Purple is also a neutral colour in terms of gender, this will appeal to both sexes seeing as it is a unisex salon

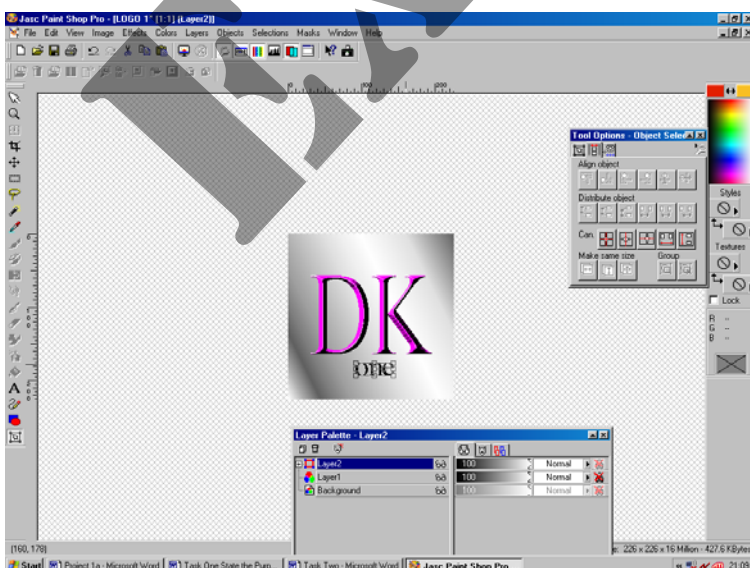
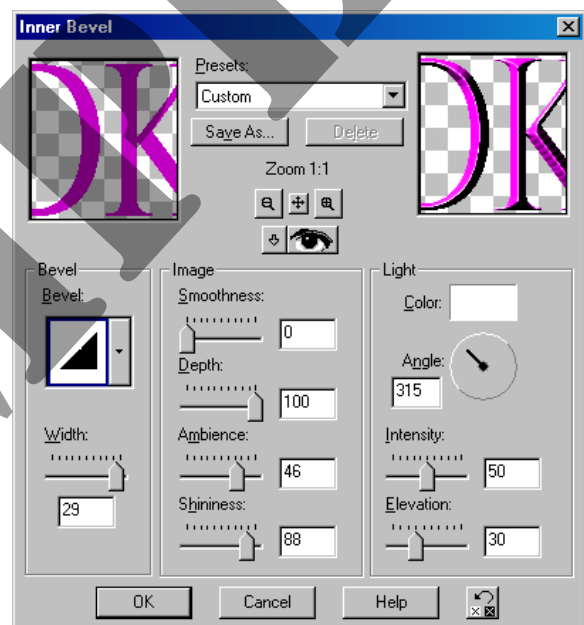
I used the Text entry tool to choose the shade and style of my text





I then converted the vector layer to a raster layer, so that I could try a range of special effects on the text in order to make it stand out from the background

I chose the Inner bevel tool as this made my text stand out as if it were made of precious metal again giving a feeling of opulence and contrasting really well with the metallic background



I used the deformation tool to position the word "one" underneath the DK I put this in lower case to contrast with the capital letters of the DK



This is the finished designed. I merged the layers together to make it easy to save as a Jpeg image so this can be inserted onto any documentation that I create

